

NATIONAL SYSTEM OF PUBLIC LANDS  
BUREAU OF LAND MANAGEMENT  
U.S. DEPARTMENT OF THE INTERIOR

# Proposed Logandale Trails Project



1

NATIONAL SYSTEM OF PUBLIC LANDS  
BUREAU OF LAND MANAGEMENT  
U.S. DEPARTMENT OF THE INTERIOR

# Proposed Logandale Trails Project Overview

- Planning Area
- Resource Management Plan (RMP) Amendment
- Recreation Area Management Plan (RAMP)
- Travel Management Plan (TMP)
- Timeline
- How to Provide Comments



2

# Logandale Trails Planning Area

The slide features two maps. The left map is a regional map of Southern Nevada, showing major cities like Las Vegas, Henderson, and Paradise, and highlighting the location of the Logandale Trails Planning Area with a red star. The right map is a detailed map of the planning area, showing a network of trails and roads. A legend on the right side of the detailed map identifies various trail types: Trail route, 470' track route, Single track route, Public parcels of Logandale Trails area not assigned to the plan, Logandale Trails area, Clark County road, Bureau of Land Management, Bureau of Reclamation, and Nevada State Private. A URL is provided at the bottom: <https://www.virtualpublicmeeting.com/logandale-trails-ea>

3

# Planning Process Overview

The flowchart illustrates the planning process. On the left, a vertical orange double-headed arrow is labeled "Environmental Assessment NEPA Compliance". To the right, three boxes are stacked vertically, each with an icon and a description:

- Resource Management Plan Amendment** (document icon): Amend to designate Logandale Planning Area as a Special Recreation Management Area
- Recreation Area Management Plan** (hiker icon): The guiding document for managing recreation use in the Logandale Planning Area
- Travel Management Plan** (road sign icon): Identifies existing routes and trails in the Logandale Trails Planning Area and determine the appropriate management for those routes

A URL is provided at the bottom: <https://www.virtualpublicmeeting.com/logandale-trails-ea>

4




**Resource Management Plan Amendment**

**Extensive Recreation Management Area**  
An administrative unit where recreation is generally unstructured and dispersed

RMP Amendment

**Special Recreation Management Area**  
An administrative unit that the BLM manages with recreation as its primary management focus



<https://www.virtualpublicmeeting.com/logandale-trails-ea>

5

**Recreation Area Management Plan**

**Recreation Area Management Plan**  
The guiding document for managing recreation use in the Logandale Planning Area.

Plan direction would allow the BLM to meet the needs of present and expected future visitor while maintaining and enhancing the natural resource values that contribute to the area's unique physical setting.



<https://www.virtualpublicmeeting.com/logandale-trails-ea>

6


**Recreation Area Management Plan**

**Management.** Includes recreation management actions, such as commitment of agency resources, services to be offered to visitors, and the development and provision of recreation sites, trails, and other facilities or services.

**Administration.** Includes regulatory actions and data management protocols.

**Information and Education.** Includes information and education actions, such as providing maps, websites, outreach, interpretation signs, and other visitor information.

**Monitoring.** Includes monitoring visitor use patterns, resource conditions, and visitor satisfaction.



<https://www.virtualpublicmeeting.com/logandale-trails-ea>

7

**Travel Management Plan**

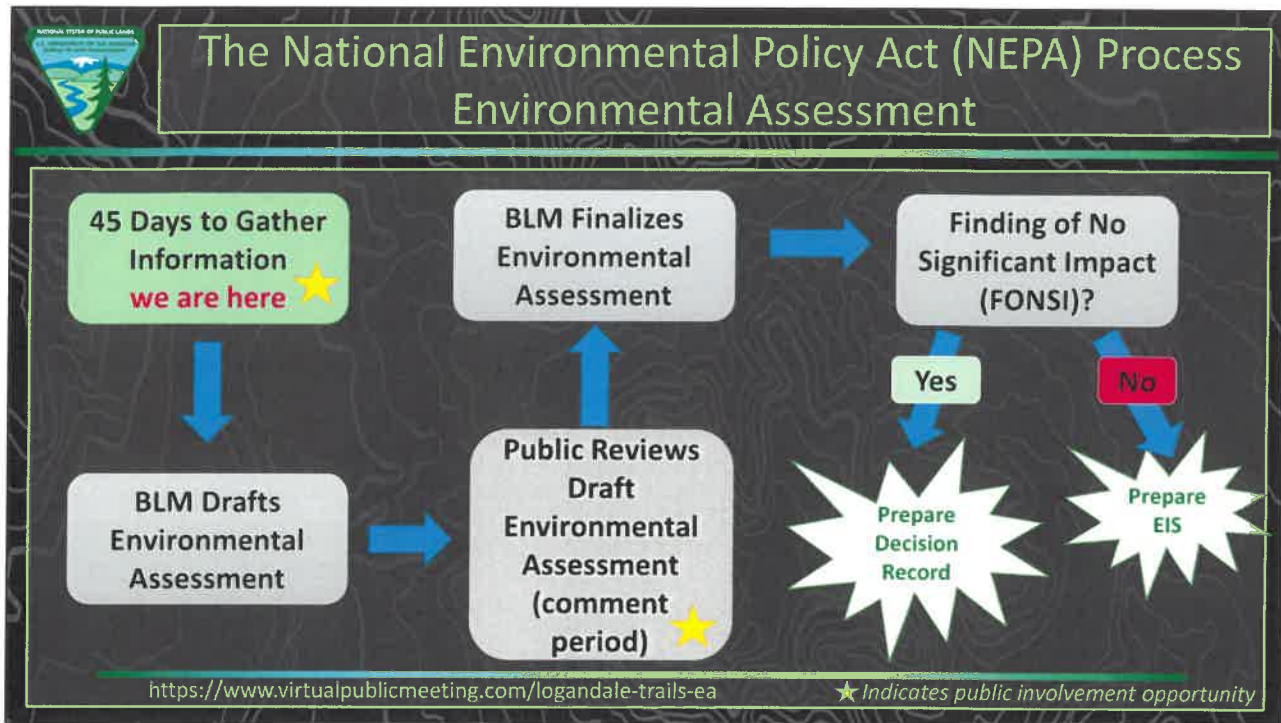
Identifies existing routes and trails in the Logandale Trails Planning Area and determines the appropriate management for those routes



<https://www.virtualpublicmeeting.com/logandale-trails-ea>

8





9

**Virtual Public Scoping Meeting**

- Wednesday November 17, 2021
- Time: 6:00 p.m. to 8:00 p.m. (PT)
- Register at:  
[https://empsi.zoom.us/webinar/register/WN\\_XMQRrFpUQbiZyUdyYLZ2Pw](https://empsi.zoom.us/webinar/register/WN_XMQRrFpUQbiZyUdyYLZ2Pw)
- For more information:  
<https://www.virtualpublicmeeting.com/logandale-trails-ea>

10



## Website

<https://www.virtualpublicmeeting.com/logandale-trails-ea>



**Logandale Trails Resource Management Plan Amendment, Environmental Assessment, Recreation Area Management Plan, and Travel Management Plan**

**Virtual Public Meeting**


Welcome to the virtual public meeting website for the U.S. Department of the Interior, Bureau of Land Management Las Vegas Field Office Logandale Trails Resource Management Plan Amendment, Environmental Assessment, Recreation Area Management Plan and Travel Management Plan (Logandale Trails Project).

The following information is intended to provide context for the Logandale Trails project and the virtual public meeting to be held on **November 17, 2021 from 6:00 p.m. to 8:00 p.m. PST**. [Click here to navigate to the meeting registration.](#)

By clicking on the links below, participants can navigate from station to



11



## How to Provide Comments

- Make a comment:
  - Email: [BLM\\_NV\\_LVFO\\_Logandale\\_RAMP@blm.gov](mailto:BLM_NV_LVFO_Logandale_RAMP@blm.gov)
  - Website: <https://www.virtualpublicmeeting.com/logandale-trails-ea>
  - National NEPA Register: <https://eplanning.blm.gov/eplanning-ui/project/2016311/510>
  - Mail:
 

BLM – Las Vegas Field Office  
Attn: Kenny Kendrick  
4701 N Torrey Pines Dr  
Las Vegas, NV 89130

Comments must be received by **December 6, 2021**

12



U.S. Department of the Interior  
Bureau of Land Management

# News Release

## **BLM Nevada News**

SOUTHERN NEVADA DISTRICT

**FOR IMMEDIATE RELEASE:** October 25, 2021

**Media Contact:** John Asselin (702) 515-5046 [jasselin@blm.gov](mailto:jasselin@blm.gov)



## **Bureau of Land Management to hold November 17 virtual public scoping forum on Logandale Trails**

**LAS VEGAS** – Recognizing the increase in local population and recreation-based activities has amplified the need for improved recreation management at Logandale Trails, the Bureau of Land Management Las Vegas Field Office will hold a virtual public scoping forum. The virtual public scoping forum will help inform the process as BLM is proposing to amend the 1998 Las Vegas Resource Management Plan to designate Logandale Trails as a Special Recreation Management Area as well as develop a Recreation Area Management Plan and Travel Management Plan.

The BLM published the Notice of Intent for Logandale Trails on October 22. This Federal Register Notice indicated the scoping period would be for 30 days; from October 22, 2021 to November 22, 2021 and that the virtual meeting would be noticed 15 days in advance and scoping period would remain open 15 days after the virtual meeting. After publication, BLM set a date for the virtual public forum on November 17. In order to give the sufficient time after the virtual scoping forum, the BLM has extended the comment period and it is now October 22 to December 6, 2021.

“We look forward to the valuable feedback on the Logandale Trails proposed plans during the scoping period and virtual public scoping forum,” said **BLM Las Vegas Field Office Manager Shonna Dooman**. “Changing the designation of Logandale Trails to focus primarily on recreation while still balancing resource protection will enable BLM to create plans to support popular recreational activities. We look forward to receiving public input during this scoping period as it will help us determine relevant issues that will influence the scope of the environmental analysis, including alternatives for the Resource Management Plan Amendment Environmental Assessment.”

The plans will provide site-specific management that will enhance trail-based motorized and nonmotorized recreation activities within the Logandale Trails System and reduce conflicts between recreation users and other resource uses such as proposed energy or transmission projects, as well as biological and cultural resources. More information about these plans can be found at <https://www.virtualpublicmeeting.com/logandale-trails-ea>

The virtual public scoping forum will be held on November 17, 2021 from 6 to 8 p.m. and will include a brief presentation on the Logandale Trails proposed plans followed by a question-and-answer portion and finally a comment period. More information on the meeting, including pre-registration – which is recommended - can be found at [https://empsi.zoom.us/webinar/register/WN\\_XMQRrFpUQbiZyUdyYLZ2Pw](https://empsi.zoom.us/webinar/register/WN_XMQRrFpUQbiZyUdyYLZ2Pw).



Currently, Logandale Trails is primarily used for recreation and is designated as an Extensive Recreation Management Area. The Logandale Trails planning area is approximately 15,019 acres of BLM managed public lands in Southern Nevada. Adjacent lands administered by the U.S. Bureau of Reclamation and Nevada State Parks, as well as private lands, will not be included in the planning efforts.

Comments on the recreation plans will be accepted until December 6, 2021 and will be incorporated into the Draft Environmental Assessment and Recreation Area Management Plan which is slated for public input in 2022.

Comments can be submitted in the following ways:

- Email [BLM NV LVFO Logandale RAMP@blm.gov](mailto:BLM_NV_LVFO_Logandale_RAMP@blm.gov)
- Online at: <https://eplanning.blm.gov/eplanning-ui/project/2016311/510>
- Mail to BLM Las Vegas Field Office, Attn: Kenny Kendrick, Supervisory Resource Management Specialist, 4701 N. Torrey Pines Drive, Las Vegas, Nevada 89130.

Before including your address, phone number, email, address, or other personal identifying information in your comment, you should be aware that your entire comment – including your personal identifying information – may be made publicly available at any time. While you can ask us in your comment to withhold your personal identifying information from public review, we cannot guarantee that we will be able to do so.

-BLM-

*This year, we invite everyone to reimagine your public lands as we celebrate 75 years of the BLM's stewardship and service to the American people. The BLM manages approximately 245 million acres of public land located primarily in 12 Western states, including Alaska. The BLM also administers 700 million acres of sub-surface mineral estate throughout the nation. The agency's mission is to sustain the health, diversity, and productivity of America's public lands for the use and enjoyment of present and future generations.*



Figure 1 Proposed SRMA Boundary for Logandale Trails

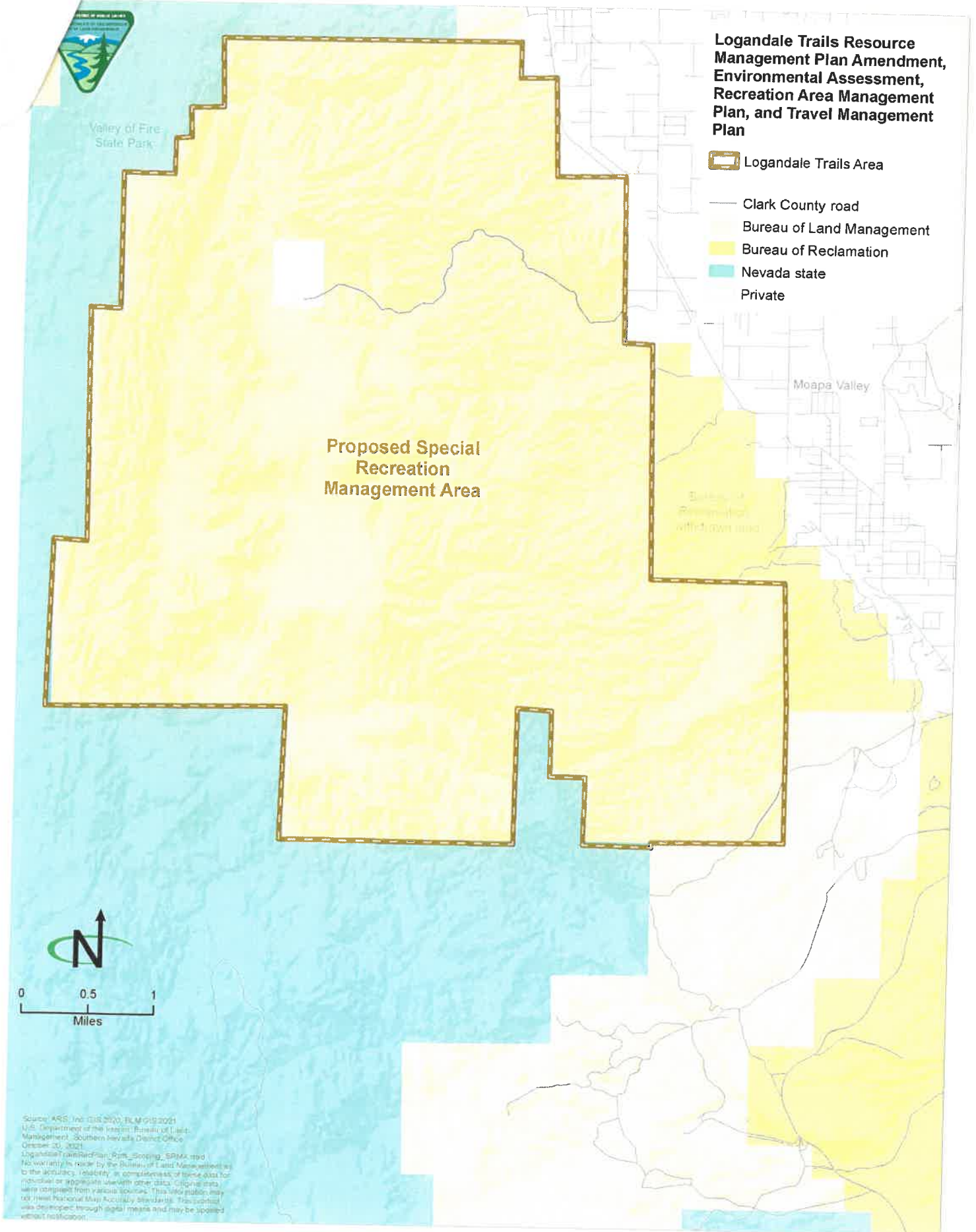




Figure 2 Route Inventory

